



# ŌWHANGO SCHOOL PĀNUI

The tamariki at Ōwhango School are engaged in our unique, rural environment, are individual in their learning, and strong in experience and success.

Phone 07 895 4823 Cell 027 895 4823

[www.owhangoschool.co.nz](http://www.owhangoschool.co.nz)

Office- Karen Erni -[office@owhango.school.nz](mailto:office@owhango.school.nz)

Principal- Ewan Starkey- [principal@owhango.school.nz](mailto:principal@owhango.school.nz)

School Board Presiding Member- Nicole Hosking- [nichosking44@gmail.com](mailto:nichosking44@gmail.com)

17/2025

11<sup>th</sup> June 2025

## THOUGHT OF THE WEEK / WHAKATAUKĪ

"I've learnt that if you spread the peas out on your plate, it looks like you ate more."

Anonymous age 6

## DATES TO NOTE

10 <sup>th</sup> June	Arts Fortnight Starts
12 <sup>th</sup> June	Year 7 & 8 Careers Day
17 <sup>th</sup> June	Our Kids Online 6:30pm
18 <sup>th</sup> June	Individual Reports Issued Tackle 5 Rugby Tournament
19 <sup>th</sup> June	Farewell Morning Tea School Disco
20 <sup>th</sup> June	<b>Matariki</b>
24 <sup>th</sup> June	Kaitieke School Show Parent Teacher Interviews
25 <sup>th</sup> June	Assembly 2pm School Board Hui 7pm
27 <sup>th</sup> June	Last Day of Term Two Teddies, Pirates, Mermaids and Facepainting Day

## PRINCIPAL'S MESSAGE

As we start our (visual) Arts Fortnight this week, last week turned into a performing arts week with the Co Physical Theatre's *Speak Up Friend* show on Wednesday, (see last week's Pānui for photos) then former student Cody Bryan performed on the electric guitar and bass guitar to the school, (see the photos below) as part of his performance credits for NCEA, then on Friday we got to see the impressive high school kapa haka group Te Kāwei Tūroa's performance at the Memorial Hall, (unfortunately we were not allowed to take photos of this performance). These last two shows were particularly powerful as it enabled our students to see what they can achieve if they continue studying the performing arts at the high school level.



Cody plays his eight-string electric guitar...



...and his bass guitar

## WELCOME TO ŌWHANGO

A warm welcome to Jordie Parkinson who has just turned five and started school.



Jordie



## CLASSROOM KŌRERO - Rimu

### Matariki Lanterns Lighting the Way

As part of our Matariki celebrations, the students of Rimu class have been creating beautiful paper mâché lanterns. This hands-on project has been a big hit, with students thoroughly enjoying the creative process. Using balloons as the base, they carefully layered strips of newspaper and glue to form a strong layer. We then used newsprint to form the shape of their lanterns. Although our lanterns are still a work in progress, with painting yet to come, there's plenty of excitement about seeing the final creations light up our learning space. Keep an eye out for the finished products as we honour Matariki with light and creativity!



Poppy, Monty and Luke doing their first paper mâché layer of newspaper onto their balloon



Hazel and Gin celebrating 'pink day' and enjoying their mahi toi (artwork)



Chanae, Hopaea, Tilia and Hayzin completing their first layers of paper mâché



This is an example of the colours, patterns and ideas we will use to decorate our Matariki lanterns.



Tilia and Chanae are pictured here showing our practise runs. We used sponges, paintbrushes and our fingers to gain the desired effects. Ngā mihi, Jessie Smith.

### FAREWELL MORNING TEA

Sadly, Boyd, Lila and Myer are moving house, up to Northland. So we will be having a farewell morning tea for them on their last day, Thursday the 19<sup>th</sup> of June. We would appreciate if everyone could bring a plate of kai to share on this day.

## REPORTS AND PARENT TEACHER INTERVIEWS

Next Wednesday we will be issuing the children's individual reports. Inside them will also be a booking form for parent-teacher interviews. The interviews are scheduled for afterschool on Tuesday 24<sup>th</sup> June.

## THEME DAY 27<sup>th</sup> June

The children have made several requests for theme days, so we are combining them together for the last day of term. On that day they may come to school as a...

Pirate

Mermaid

Bring a teddy

Do some face painting.

As always, the last day of term is also a mufti day.

## DISCO

On Thursday 19<sup>th</sup> June we have our annual school disco. The theme is Glow in the Dark, so start planning your outfit! The year 8s are organising this and are working on the music and games.

It will be in the Ōwhango Hall from 6-8pm, parents are welcome to attend, or you can drop your kids off as teachers will be present. Please bring your own drink bottle of water as dancing is thirsty work, and a plate of food to contribute for supper. This is for current Ōwhango School students only.



## SKIING PROGRAMME

Just a reminder that we need the permission slips in by the end of term. See last week's newsletter for the details.

## YEAR 7 & 8 CAREERS DAY

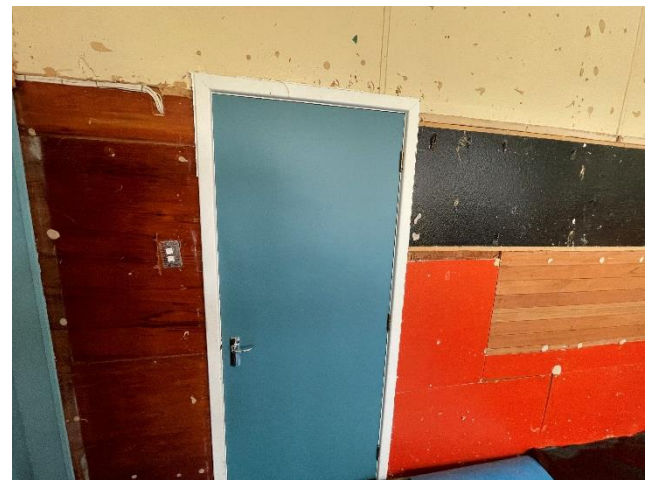
The year 7 & 8 will be at this event tomorrow, Thursday 12<sup>th</sup> June. They must be wearing their full school uniform.

## BIKE-A-THON – due this Friday

Please collect and pay your bike-a-thon sponsorship money **by this Friday** into the PTA account in one lump sum to 030 426 0156205 00 with your name as a reference, then email the office to confirm you have done this. Thank you.

## MULTI-PURPOSE ROOM

Work continues converting our old staffroom into the multi-purpose room. This week we had the Hayden Wind onsite doing some building prep- ripping off the old wall linings to ready it for the new wall lining. Also, Ben Splitt and Briden Cowlshaw were doing some preparatory electrical work. The next step is installing some batt insulation on the external wall.



With this room being the oldest in the school, it is interesting to see the layers of history with the range of wall linings exposed from the past- rimu panelling, pinex lining in black, orange and natural, and rimu match lining.

## ASSMEBLY

We have a school assembly on Wednesday 25<sup>th</sup> June where the children will be showing the work they have done as part of the Arts Fortnight. You are all welcome to come. It will start at 2:00pm.



## KAITIEKE SCHOOL SHOW

On Tuesday 24<sup>th</sup> June we will be travelling by bus to Kaitieke School to see their production "The Unlikely Contestant" – see the poster at the bottom of the Pānui. Rather than send out permission slips for this, can you please contact the school if you do not give permission for your child to attend this show. There is no cost.

## OUR KIDS ONLINE- final reminder

We **strongly encourage every family** to have at least one adult attend this event; **this is important.**

Here is a hyperlink to a short video explaining this event:

[Our Kids Online Parent Meeting.](#)

We have tickets at the office of this event, or you can purchase online for \$10. It is being held at the Taumarunui & District Memorial Hall on Tuesday 17<sup>th</sup> June from 6:30pm to 8:30pm.

## SCHOOL BOARD HUI

We have a school board hui on Wednesday 25<sup>th</sup> June at 7pm in the staffroom. You are all welcome to attend.

### Extra-Curricular Sports Notices

## ŌWHANGO HOCKEY 2025

In term one we started hockey and through the start of term two. We played 12 games against 10 different teams. In our team were students from year 5-8. The schools that we played were Turaki, Taumarunui Primary, Tokorima, Manunui, St Pats and National Park. We came out with 3 losses, 7 wins and 1 tie ending us with 2nd equal. We really enjoyed fast hit offs, making a good assist, playing as a team, and of course scoring and winning! At prizegiving Hazel O'Donnell won overall best attitude on the field and Nico Brewer won the overall most improved player for the entire tournament. Big thank you to Willy O'Donnell for being there at every game, coaching, managing, and supporting us throughout the season. Also, a humongous thank you to Inneke Cumming for organising the whole competition and for the lights working over the court. By Hazel and Mason



The hockey team

## PRIMARY NETBALL LEAGUE

Congratulations to our players of the day:

For the first junior team game- Brodie Joyce, for the second game- Lucy Atkins, for the senior's game- Charlotte Owen. And Charlotte's name was drawn out of the hat to win the netball!



Darcy and Kaelyis-Rae in action on Monday

### Week 7 Monday 16<sup>th</sup> June:

4.20pm Turaki Kōura vs Ōwhango Junior

5.15pm Turaki Gold vs Ōwhango Senior

### Monday's results:

PRIMARY NETBALL LEAGUE		
WEEK SIX MATCH RESULTS		
TURAKI KŌURA	3 vs 7	TKKM TE KĀKANO
ŌWHANGO JUNIOR	2 vs 1	MANUNUI WOLVES
TKKM TE PIHINGA	17 vs 3	TURAKI KŌURA
ŌWHANGO JUNIOR	4 vs 2	TKKM TE KĀKANO
TURAKI GREEN	6 vs 22	TURAKI GOLD
MANUNUI FALCONS	23 vs 15	TKKM TE MĀHURI
MANUNUI CHAMPS	2 vs 23	TURAKI GOLD
ŌWHANGO SENIOR	40 vs 3	MATIERE SENIOR

### Community Notices

#### **PRE-LOVED WINTER GEAR SALE**

This is an excellent way to get some cheap ski and snowboarding gear for the season. Be there for the opening as the bargains are snapped up! See the poster below.

#### **PAYING BY INTERNET BANKING DETAILS:**

**Ōwhango School:** Uniform/stationery/sport fees  
pay to 03 0426 0141783 00

**PTA:** Fundraisers 030 426 0156205 00

#### **REMANING TERM DATES 2025**

**Term Two** Monday 28<sup>th</sup> April to Friday 27<sup>th</sup> June.

**Term Three** Monday 14<sup>th</sup> July to Friday 19<sup>th</sup> September

**Term Four** Monday 6<sup>th</sup> October to Wednesday 17<sup>th</sup> December

#### **THANKS TO OUR SPONSORS FOR THIS YEAR:**

**Duffy Books in Schools:** W & C O'Donnell, Doyle Valuations, Ōwhango Motors, Awa Rere Hideaway, Tania and Mark Bramley.

**Fern Energy Fuel for Schools Scheme**

**Ōwhango Adventures:** Free bus use for trips

**Sue Morris and Darren Brown Contactors** for the firewood logs and delivery

