



ŌWHANGO SCHOOL PĀNUI

The tamariki at Ōwhango School are engaged in our unique, rural environment, are individual in their learning, and strong in experience and success.

Phone 07 895 4823 Cell 027 895 4823

www.owhangoschool.co.nz

Office- Karen Erni -office@owhango.school.nz

Principal- Ewan Starkey- principal@owhango.school.nz

School Board Presiding Member- Nicole Hosking- nichosking44@gmail.com

3/2024

21st February 2024

THOUGHT OF THE WEEK / WHAKATAUKĪ

Anei au, tō pou whirinaki.

I'm here, I'll support you.

DATES TO NOTE

21 st Feb	Blueberry Farm Trip- Totara class
27 th Feb	Assembly 2:15
28 th Feb	School Board Hui
8 th March	Mountain School Swimming
15 th March	Inter-school Swimming
22 nd March	Bike Trip- Tongariro River Trail
26 th March	Assembly 2:15
29 th March	Good Friday
1 st April	Easter Monday
2 nd April	Easter Tuesday
5 th April	Yr 5-6 Ki-o-rahi Day
9 th April	Show- Matinee Performance
10 th April	Show- Evening Performance
12 th April	Yr 7-8 Ki-o-rahi Day
	Last Day of Term One

PRINCIPAL'S MESSAGE

Working Bee

Thank you to the team of willing workers who attended our working bee on Saturday morning. We appreciate you giving up your time to help spruce up the school and get all of those jobs that have been lingering around, done, as well as some that were even not on our list.

We now have enough wood in our shed for the next few years to heat our school (Te Hau's tip truck was especially useful for this job); our ball wall is all screwed back, sanded and primed ready for the next design to be painted onto it; the south side of the school is water blasted and looking like new; the inside of the pool has been scrubbed; our mosaic mural has another coat of paint along the top and has been scrubbed; the branches growing through the school pool fence are gone, as are all of the self-seeded weed trees from the garden; the scooter track has had its foliage pruned back; and we have new shelving

in our staff cupboard (the new name for our temporary staff room).

One of the goals in our Strategic Plan written last year is: *As a community hub we encourage whānau and community involvement;* this working bee is one way that we achieve this goal, by getting the community together, making connections and creating a sense of belonging.



The school sign gets a sand ready for revarnishing



Kat water blasts the south side of the buildings and the moss that was growing on the ground



Siobhan scrubs the pool



Te Hau off- loads another load of firewood. Thanks to the Petersen's for the gift of the slabs of firewood.



Guy helps with the firewood



Emma and Mary paint the top of the mosaic wall

CLASSROOM KORERO- Rimu (Senior Class)

I like to begin every new school year with the students completing a self-portrait. It makes the class feel like their own and it's great to decorate the walls with new, refreshing colourful art. Recently we have been looking at abstract art. Abstract art is often unrecognisable from the original subject, but instead uses shapes, colours and forms to achieve its effect. Typically, with art, the students are expected to 'copy' the original subject they are wanting to draw. But using the abstract art style they were expected to use contrasting, vibrant colours and shapes. As we are currently also studying geometry in maths, it was a great opportunity to interweave the two curriculum areas together using symmetry, shapes, contrast and repetition of colours.

Na Whaea Jessie.





SIQBHAN IS A KIWI

After 14 years of living here, we congratulate Siobhan, Dave and Daithi on officially becoming kiwis! On Tuesday they attended the citizenship ceremony at the council offices in Taumarunui, where they were officially welcomed as New Zealand Aotearoa citizens. To celebrate, the staff put on a special morning tea, with such fine fare as pavlova and kiwifruit, chippies with Maggi reduced cream dip, carrot sticks, fry bread, asparagus rolls, and meat pies!

BE PROTECTED AGAINST MENINGOCOCCAL DISEASE- a message from Te Whatu Ora Health NZ

Meningococcal disease is a dangerous illness that can kill or cause serious disability. The best way to protect against the disease is to be vaccinated with both the MenB and the MenACWY vaccines. **Until 28 February**, these are available **free** for those aged 13 to 25 in close living situations such as a boarding school or hostel.

For more information google and visit: Meningococcal vaccines – Te Whatu Ora | Health New Zealand

GARDEN RECIPE

Kahikatea had another successful garden baking day using carrots out of the garden to make some delicious carrot and pineapple muffins. Students worked in groups of three to prepare the carrots and mix ingredients together. The muffins were enjoyed by staff and students at lunchtime.



Hayzin and Aleah about to eat some muffins

Ingredients

- 1 1/2 cups flour
 - 2 eggs
 - 1 cup Chelsea White Sugar
 - 1 teaspoon vanilla essence
 - 1 teaspoon baking powder
 - 1 teaspoon baking Soda
 - 2/3 cup vegetable oil
 - 1/2 teaspoon salt
 - 1 cup grated carrot
 - 1/2 cup crushed pineapple
 - 1 teaspoon ground cinnamon
 - Optional: sultanas or raisins
- Method

Sift dry ingredients into a bowl. Beat together eggs, vanilla essence and oil. Add to flour mixture. Add carrots, sultanas, pineapple and juice, mix well. Fill greased muffin cups and bake at 200°C for 20 minutes. Makes 12 large muffins.



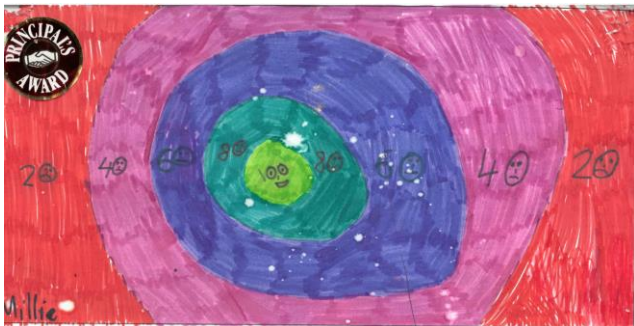
Our ball wall is ready for repainting

BALL WALL DESIGN COMPETITION

We are having a competition among the students to create a new design for our ball wall. During the working bee we sanded the peeling paint, primed the surface and screwed down the panels that were lifting, in preparation for it being repainted. The last time we did this was seven years ago, when Millie Frampton's design won.

The conditions of the competition are:

- You may enter only once
- Every entry receives two house points
- The winner gets their design painted onto the wall and gets ten house points
- Highly commended entries get an additional two house points
- Make sure your design is easy to paint onto the wall



Millie's winning entry from our last competition

2024 STATIONERY PACKS PAYMENTS DUE- 1st March

Please pay for your 2024 Stationery packs by Friday 1st March. These were issued at the beginning of term cost \$22.00 per student. Please make payment to BoT account: Westpac 03 0426 0141783 00 with "Stationery" as reference.

CONSTRUCTION MATERIALS NEEDED- a reminder

This term the junior room is studying Space. We will soon be constructing rockets, satellites, and rovers, using boxes, lids and containers from our rubbish bins. For example:

- Smallish boxes (about toothpaste box size)
- Cardboard tubes (glad wrap, toilet paper tubes)
- Lids of any size and shape
- Tin foil
- Small plastic containers
- Skewers or toothpicks

Much of the creativity with this task is reshaping everyday items- for example a lid of a milk bottle lid can become a wheel, corrugated cardboard can become the tread on a wheel, tin foil can be shaped into an antenna, toothpicks or skewers can be the brackets supporting the antenna. We will be using cold glue guns that enable a range of materials to be easily stuck together.

We will have a yellow bin in the junior room that you can put them into. Thank you.



Our skate park is progressing well, with the first of many concrete pours today

ASSEMBLY- a reminder

On Tuesday 27th February Whaea Siobhan's class will be hosting our first assembly for the year. At our assemblies the host class shares some of the mahi that they have been doing, we sing a song, have a few notices, and award Duffy Books to those who have earned them.

We welcome our community to attend these assemblies, we aim to finish just before 3pm.

SCHOLASTIC BOOK CLUB- final reminder

If you would like to order some books you need to get the form back to us by the 28th of February.

Community Notices

TAUMARUNUI DISTRICTS RUGBY COACHING

On Saturday the 9th of March at 10am our whānau at Taumarunui Districts are proud and thrilled to welcome an amazing array of world class coaches to the Taumarunui Domain for a day of fun and learning from some of Aotearoa's finest coaches. The five amazing coaches coming to the heart of the King Country are Sir Wayne Smith (All Blacks, Black Ferns, Chiefs, Crusaders coach), Neil Barnes (Taranaki, Chiefs, Fiji coach and 2023 national coach of the year), Jarrad Hoeata (Taranaki forwards coach and former NZ rugby great), Brad Cooper (Taranaki backs coach), Issac Boss (former King Country coach, Ireland international, Hurricanes and NZ rugby stalwart)

The Districts have also invited the Taumarunui Eels Senior team down to train with us and we are also opening it up to any coaches in Taumarunui area who would like to be part of the day. It would be great opportunity to see/learn how some of the best coaches in New Zealand do it. There will be a Q & A and raffles drawn with the coaches afterwards, in the Districts club rooms.

We can't wait to see you all there on field and afterwards.

Thanks, any inquiries Matt Lord 027 826 3956
(Also see the poster below)

FLOWERS FOR SALE- a reminder

Hi everyone. The Grounded Artisan is back again for 2024. If you would like to purchase a bunch of

freshly cut blooms, bountiful in colour and ready to brighten up yours or a friend's day, please txt me on 027 331 9377. I can make up a bunch to suit any budget and 20% of sales go toward the Owango School PTA. Signed Regan Hoban

PAYING BY INTERNET BANKING DETAILS:

Ōwhango School: Uniform / stationery / sport fees pay to 03 0426 0141783 00

PTA: Fundraisers 030 426 0156205 00

2024 TERM DATES

Term One- 5th February to 12th April

Term Two- 29th April to 5th July

Term Three- 22nd July to 27th September

Term Four- 14th October to 18th December

Teacher Only Days- 4th June & 25th November

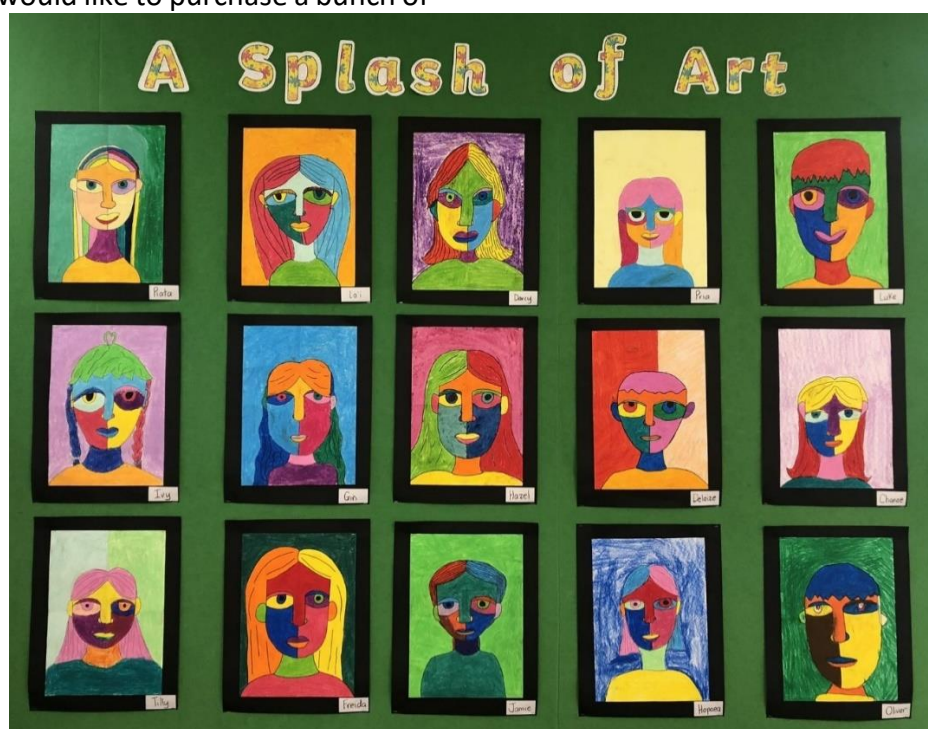
THANKS TO OUR SPONSORS FOR THIS YEAR

Duffy Books in Schools: W & C O'Donnell, Doyle Valuations, Ōwhango Motors, S & M Ashcroft Partnership, Tania and Mark Bramley.

Firewood- The Petersen's

Ōwhango Adventures: Free bus use for trips

Fern Energy Fuel for Schools Scheme: Blazing Paddles Ltd, Bos Taurus, DR & LA Marshall Ltd, JB & KA Lord, KF or VI Kimberley, MJ & TM Lord, O'Donnell WM & CE, RC & JF Walker, Tylee Family Trust, W Bryan Earthworks Ltd, Waihou Farming Trust.



TAUMARUNUI DISTRICTS COACHING DAY

SATURDAY 9TH MARCH 10AM START TAUMARUNUI DOMAIN



Brad Cooper

Taranaki Bulls Backs Coach
2023 National Rugby Champions



Sir Wayne Smith

Former All Blacks , Chiefs ,
Crusaders , Black Ferns Coach



Neil Barnes

Taranaki Bulls Head
Coach 2023 National Coach of the year
2023 National Rugby Champions



Issac Boss

Former King Country Coach
Ireland International

Taumarunui Districts are proud to host these amazing coaches for day of learning and fun at the Taumarunui Domain. All interested in Coaching rugby in the Taumarunui area are welcome down at the domain for an amazing day.



Jarred Hoeata

Taranaki Bulls Forwards Coach
2023 National Rugby Champions

For More Info Contact

MATT LORD - 0278263956

JOHN ALLEN - 0275429225