



# ŌWHANGO SCHOOL PĀNUI

The children at Ōwhango School are engaged in our unique, rural environment, are individual in their learning, and strong in experience and success.

Phone 07 895 4823

Cell 027 895 4823

www.owhangoschool.co.nz

Email: office@owhango.school.nz

principal@owhango.school.nz

26/2023

2<sup>nd</sup> August 2023

## THOUGHT OF THE WEEK / WHAKATAUAKĪ

“Matariki, hunga nui”

(Matariki, the gatherer of people)

During the Matariki festivities, people gather together to celebrate the passing of the year and the hope of a new season. This whakataukī speaks to us about the gathering of people during Matariki.

## DATES TO NOTE

4 August	Y4-8 Ski Trip
7 August- 18 August	Visual Arts Fortnight
11 August	Y4-8 Ski Trip
	Y1-3 Mud Run option
17 August	Crazy Hair Day
18 August	Y4-8 Ski Trip
22 August	Assembly- Arts Fortnight
23 August	Cross Country-@ Kaitieke
24 August	Mobile Library
25 August	Y 4-8 Ski Trip
30 August	Board Hui 7pm
1 Sept	Y1-3 Ski Trip
	Y4-8 Interschool Cross Country
5 Sept	International Day
8 Sept	Y1-3 Ski Trip
	Y 4 Soccer Tournament
13 Sept	Year 5-8 Ripa Tournament
15 Sept	School Disco
19 Sept	Assembly
20 Sept	Mobile Library
22 Sept	Whole School Ski Day Backup

## PRINCIPAL'S MESSAGES

### Community Consultation Feedback:

#### Year 7 & 8 Technology Lessons

In our community consultation there was a question on what we are going to do now that the high school is not providing year 7 & 8 technology lessons.

I have been working with the other principal's in the area through Central King Country Principals Association, (CKCPA) to see if we can purchase the equipment needed to teach technology and put it into a lending library for our schools to use. I have been researching what other schools in Aotearoa do when they have been in this situation, and finding out what equipment is best to have and doing some costings on this. I will be taking this information to our next CKCPA hui to see whether this plan can proceed.

I am also looking into reconfiguring the staffroom so that it can have more ovens in it and a better layout so that cooking lessons can happen in there, as well as sewing/soft material lessons can be carried out in there. This would take some time as it would be part of our next 5-year property plan which gets drawn up next year. I am also looking at the possibility of converting one of the sheds into a woodwork and hard materials shed, with a roof so that lessons can happen in all weather.

Unfortunately, we were only given two weeks' notice from the high school that our lessons with them would cease. This was unexpected and it really left us in the lurch. Be assured that the classroom teachers are still teaching the year 7 & 8 students technology, it just isn't in the same format as they have had in the past. I will let you know when we have made any further progress in this.

### Our Complaints Process

I think it is timely to remind everyone that if you have a complaint, then there is a procedure to follow. It is explained clearly in the flowchart that has been inserted at the bottom of this Pānuī.

## CLASSROOM KORERO- Seniors

### House of Science

Julz from The House of Science came to do a lesson with the senior class tamariki. It was based on volcanoes and the children enjoyed hands on learning. They learned about the earth's different layers and make up. They then illustrated that understanding with different coloured plasticine. They also learned about tectonic plates, and this was demonstrated with physical earth models.



Julz has all the students' undivided attention



Max and Konna add the outer earth's crust to their plasticine model.



Taylor and Lo'i show their plasticine earth model cut in half, representing the inner core, outer core, lower mantle, upper mantle and the earth's crust.

## EPro8

This term we are working with the EPro8 engineering construction and electronics kit in the senior class. The Digital Curriculum is more than just using computers. It is a way of thinking, of breaking a complex task down into parts. The EPro8 equipment is perfect for this. The challenge cards are designed with the Digital Curriculum thinking in mind. Every day a group of 3-4 students complete one of the EPro8 challenges.



Lucas, Delaize and Oliver work at a EPro8 task, using lengths of aluminium, wheels, pulleys, axels, gears, tools, joiners, rope, bolts, wing nuts, reels and electronics.



Using a control board and electrical wires, Delaize, Lucas and Oliver drive their EPro8 vehicle around the classroom. Complete with wheels and lights!

## Soccer

Todd Nicholson came into school to present the Ōwhango soccer team with participation certificates. Once again, thank you for your time and effort with our soccer tamariki Todd!



The soccer team

## MOUNTAIN SCHOOLS CROSS COUNTRY

The kids are busy training for our cross country race. This year it will be run differently as it is being organised by and held at Kaitieke School. It will be on Wednesday 23<sup>rd</sup> August. The schools attending are the Mountain School cluster: Kaitieke, Ōwhango, Manunui and National Park. It will be a great opportunity to compete against other students and run a different cross-country course, one with hills and obstacles which will be more like the interschool event.

The children MUST wear suitable footwear - no bare feet allowed, due to the odd bit of thistle/blackberry and some gravel. We are unsure how long this event will take, so we may be back at school by lunchtime. However, in case we are not, a large, healthy packed lunch. Also, a drink bottle with water only in it. They do not need to wear their uniform but something that they can easily run in. Please bring WARM clothing for after their races as it will be cold.

Grant Lethborg is very kindly providing us with a bus to transport the school down there for the day, however we need a few of extra cars as well. You are welcome to join us for the day to cheer on the runners. Please return the permission slip at the bottom of the panui this week.

This is a compulsory event for the whole school as part of their P.E. programme. However, we do allow the kids to participate at their own skill level, so if that means a lot of walking, or not completing the full course, then so be it.



Our nicely spread new soft-fall chip

## THANKS TO OUR VOLUNTEERS

A shout out to a few of our helpers from last week, Aaron Owen heard our request to help move the truckload of chip to the playgrounds with the help of some of the senior students they have completed that job. Also, thanks to Haylie and Hannah who came and coached the basketball at lunchtime.



Haylie and Hannah coaching the basketball team

## YEAR 4-8 SKIING

Again, the weather was not on our side, and we had to cancel that trip, with the mountain closing for the day. The good news is that there is a heap of snow now, with many of the lifts operating. So fingers crossed for this week's trip. Please check the transport, passes and lessons list attached to the bottom of this pānui. Please contact us asap if there are any needs to be a change.

Note that we have not been charged for the last two trips as the mountain eventually closed, so your money has been rolled over to the next week.

Also, an email will always be sent out on the morning of the trip to say whether the trip is on or cancelled. This happens as soon as the ski field

posts their first status report on their website, which is usually sometime after 6:30am. Please let me know if you have not been getting these emails. If there are any emergencies you are welcome to call be on my cell phone 027 631 8631 but I do not answer my phone if I am driving. You can also text me on that number, but I am less likely to hear a text come in.

### **YEAR 1-3 SKIING- permission slips due**

We need the few remaining permission slips in for the year 1-3 ski trips by Friday 11<sup>th</sup> August so that planning can proceed smoothly. Those who have not returned them were emailed another form on Monday.

### **KAPA HAKA**

All three classes have been enjoying weekly kapa haka lessons with Whaea Jessie. The junior class is on Monday, the middle class on Tuesday and the senior class on Wednesday. The tamariki all enjoy singing together, learning the actions to our waiata-a-ringa and are even getting pretty sharp with the poi too!

### **NEW HEAT PUMPS**

You may have noticed that our corridor has been rather cold this winter! This is because the heat pump died. However, we now have it replaced as well as the one in the office, so we are snugly and warm again. The other good news is the external unit has been removed from the roof and is no longer obscuring our beautiful mural. Small wins.

### **OWHANGO SCHOOL NETBALL UNIFORM FUNDRAISER**

The school has been generously donated by Pat Lacy of Silver Fern Farms, a delicious 4kg Beef Cube. We are raffling this off to help pay for our new school netball uniforms. \$5 per ticket Please contact Maree or one of the players if you would like to purchase a ticket or two or even a book!

Maree - 027 258 2515, or email [maree@owhango.school.nz](mailto:maree@owhango.school.nz)  
Thank you for your support.

### **FREE SECOND-HAND UNIFORMS**

Thank you to Michelle Ross and whānau for dropping off some school uniform pieces to the

office. Please see your classroom teacher if you are interested. There are shorts, track pants and 2x polo shirts. The majority are size 12.

### **PTA HOT LUNCH THURSDAY**

Thanks to everyone who supported our first Hot Lunch Thursday. This week's menu is the same:

**Pies \$3**

**Sausage Rolls \$3**

**Hot Dogs \$4**

**Hamburgers \$5**

**Milo \$1 bring your own named cup**

Remember to get your orders in before 9:00am in the Ako Room. No email or phone orders please.

### **RNZ BALLET DANCE LESSONS**

The children enjoyed their lessons with the teacher from the Royal New Zealand Ballet on Tuesday. See the photos below.



The junior room



The middle room



Monty shows his co-ordination and muscle control

## **VISUAL ARTS FORTNIGHT**

Next week we start our biennial Visual Arts Fortnight. During this time, the teachers condense the core topics of reading, writing and maths into the first period, then over the second and third periods they work through the lens of the visual arts. This gives us time to dig deeply into the skills, knowledge and attitudes that underpin this area. On the 22<sup>nd</sup> August there will be a school assembly to show what we have done. Please note that this is not the only time we teach the visual arts, rather it frees us up to spend longer on it, which is especially important in this subject as it can be time consuming to get out the materials, working over several sessions to refine the work, and clean up. Every other year we do a performing arts focus through the school show.

## **YEAR 1-3 MUD RUN OPTION**

On Friday 11<sup>th</sup> August, while the year 4-8 students are skiing, the year 1-3 students have the option of participating in the mud run. An email was sent out about this on Monday as we needed to get entries in by today. If there are any last-minute entries we need them by 4pm today. This event is parent run as all of the teachers teaching at school or running the ski day; this means parents need to get their child there and to supervise them.



Soren, Zurich and Juan get creative on the swing

## **Community Notices**

### **TAUMARUNUI JUNIOR HOCKEY**

The final week of hockey was held last Wednesday. Our Ōwhango team placed 3<sup>rd</sup> in the round robin tournament, ka rawe! Many thanks to Willy O'Donnell for coaching the team again this year; he deserves a long-service medal.



The hockey team

### **MINI MEEZ BASKETBALL**

This week's game:

Court 2 5.25pm ŌWHANGO SUPERSTARS V  
MANUNUI BREAKERS

### **ŌWHANGO ALIVE QUIZ NIGHT**

See the poster below

### **SAM THE TRAP MAN**

See the poster below

### **ORRIS AGM**

See the poster below

### **PAYING BY INTERNET BANKING DETAILS:**

**Ōwhango School:** Uniform / stationery / sport fees pay to 03 0426 0141783 00

**PTA:** Fundraisers 030 426 0156205 00

### **2023 REMAINING TERM DATES**

**Term 3-** 17<sup>th</sup> July to 22<sup>nd</sup> September

**Term 4-** 9<sup>th</sup> October to 19<sup>th</sup> December

**Teacher Only Days-** 17<sup>th</sup> November and 20<sup>th</sup> November.

## THANKS TO OUR SPONSORS FOR THIS YEAR

**Duffy Books in Schools:** W & C O'Donnell, DG Brown Contracting, Doyle Valuations, Ōwhango Motors, S & M Ashcroft Partnership.

**Ōwhango Adventures:** Free bus use for trips

**Fern Energy Fuel for Schools Scheme:** Blazing Paddles Ltd, Bos Taurus, DR & LA Marshall Ltd, JB & KA Lord, KF or VI Kimberley, MJ & TM Lord,

O'Donnell WM & CE, RC & JF Walker, Tylee Family Trust, W Bryan Earthworks Ltd, Waihou Farming Trust.

**PTA Sponsors:** Ringa Kaha Cabin, The Grounded Artisan, The Park Hotel Ruapehu, Kainui, Pepper & Me Pack, Purita Te Manawa, Vertigo Rock Climbing, Thai Restaurant, Blue Hill Café, Liquorland.

**Blue Hill Cafe:** netball sponsorship

## Year 4-8 Ski Trip Friday 4<sup>th</sup> August

Transport				
Driver	Can fit	4WD	Students (39)	Kids Going
Tash	2	Y	Juan, Taylor,	2
Rueben	5	N	Darcy, Piata, Tilia, Hazel,	4
Lakenn	3	Y	Delaize, Hayzin, Kaelyis-Rae,	3
Neil	3	Y	Jamie <i>meet us there</i>	1
Eike	4	Y	Gin, Freida, Charlotte, Cailin,	4
Michelle G	1	Y	Lucas <i>meet us there</i>	1
Michelle R	5	Y	Leith, Ivy, Charlie, Aiden,	4
Abe	4	Y	Lo'i, Pria, Rose, Waikura	3
Trudie	4	Y	Oliver, Mason, Beau,	3
Bee	4	Y	Joshua, Aleah,	2
Nicole	4	Y	Ewan, Soren, Zurich, Monty,	3
Haylie	4	Y	Poppy, Jack, Scarlett,	3
Mark	4	Y	Dad, Max, Konna,	2
Te Hau	4	Y	Hopaea, Tahu, Tyler	3
Ewan	3	Y	Back-up car in case it is needed	
			<b>Total</b>	<b>38</b>
<b>Kids Not Going</b>			James,	1

PASSES-ADULTS	
NEED A PASS & SKIS – 1:6	HAVE SEASONS PASS
Tash	Michelle G
Reuben	Neil
Lakenn	Ewan
Eike	Mark
Trudie (not skis)	
Nicole	<b>NOT NEED A PASS- not skiing</b>
Hayley	Abe (on foot- pass to share)
Waikura	Te Hau?
Michelle R on foot -pass to share with Abe	
Bee (on foot- own pass )	

## LESSONS- All Lesson Times: 9:30-11:20

### Level 1 Student has never skied before

Max, Joshua, Delaize, Lo'i, Tilia, Hopaea, Darcy, Poppy, Aleah, Hayzin, Kaelyis-Rae, Tahu, Tyler.

<b>Adult helpers:</b> <i>Lakenn, Rueben, Hayley, Michelle R, Mark, Abe, Bee, Te Hau, Waikura</i>
<b>Level 2 Student is able to stop in a wedge</b>
Gin, Scarlett Aiden, Beau, Leith, Ivy,
<b>Adult helpers:</b> <i>Eike,</i>
<b>Level 3 Student is able to turn in a wedge</b>
Rose, Jamie, Piata, Zurich, Soren, Charlotte, Monty, Pria, Hazel, Jack, Juan, Mason,
<b>Adult helpers:</b> <i>Nicole, Tash, Trudie</i>
<b>Level 4 Student is starting to match their skis to parallel</b>
Cailin, Konna, Charlie, Taylor, (note that due to the low numbers Levels 4 & 5 will be combined for their lesson).
<b>Adult helpers:</b> <i>Neil,</i>
<b>Level 5 Student can turn parallel confidently</b>
Oliver, Lucas, Freida, (note that due to the low numbers Levels 4 & 5 will be combined for their lesson).
<b>Adult helpers:</b> <i>Michelle,</i>

✂-----

### Mountain Schools Cross Country Permission Slip

**Wednesday 23<sup>rd</sup> August Kaitieke School, departing at 9.00am**

(As this is a new event we are unsure of the end time, but it may be at lunchtime.)

**Family name** \_\_\_\_\_

**My child / ren** \_\_\_\_\_ may attend the Mountain Schools Cross Country at Kaitieke School

#### ADULT HELP

**YES / NO** I can stay and support all day

#### TRANSPORT

Grant Lethborg is kindly providing a bus to transport our school down to Kaitieke. We will need two or three extra cars as well.

**YES / NO** I can provide smoke-free, and seat-belted transport for \_\_\_\_\_ (write number) children, in a registered and warranted vehicle that will be driven by a fully licensed driver who adheres to all traffic regulations. I understand that I will need to stay for the whole event if I am providing transport for children. (Note, drivers will be paid some money to go towards their petrol costs.)

**YES / NO** I will be sending a booster seat for my child  
(Note by law children under 7 must be in a booster seat)

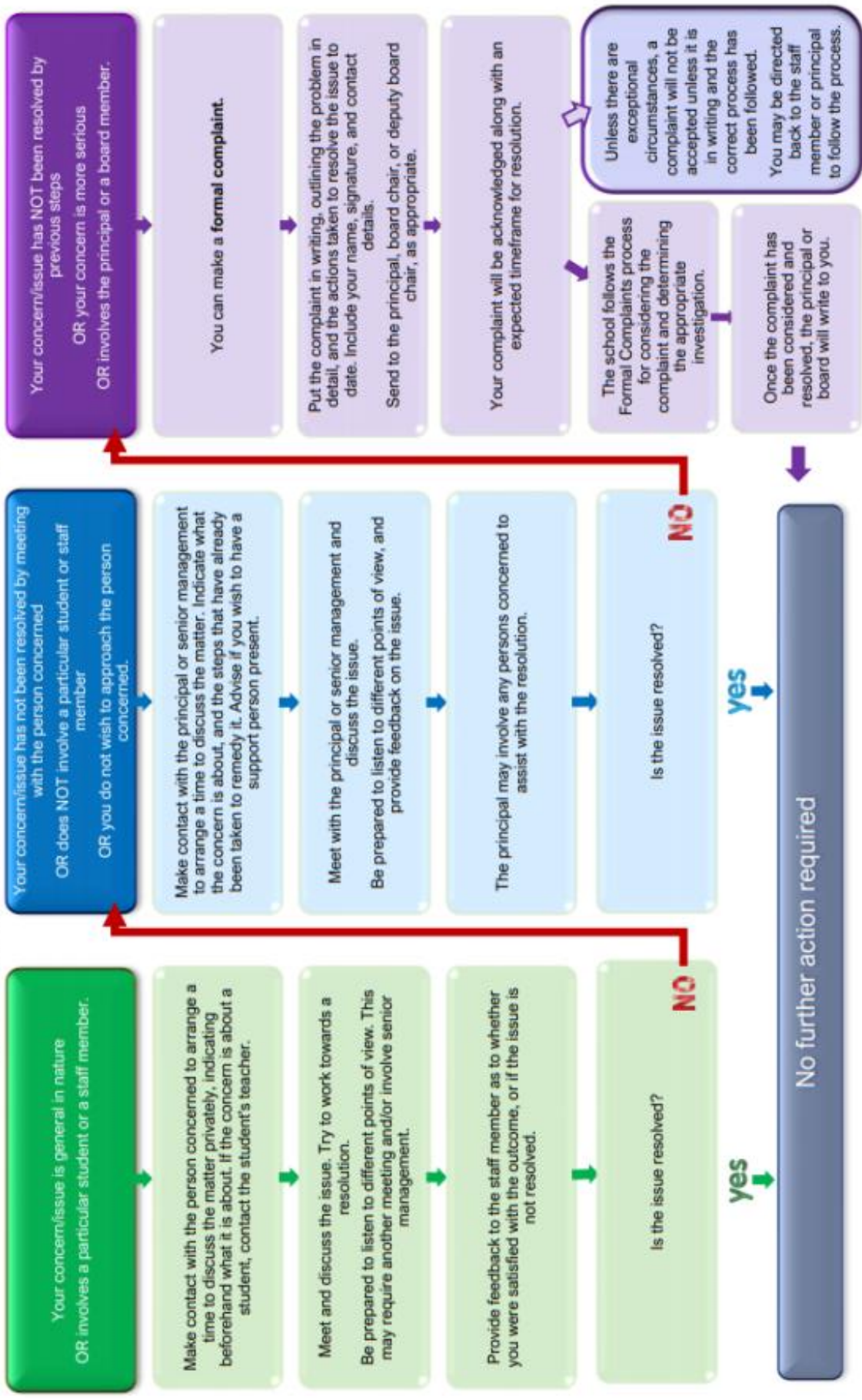
***If you are assisting with transport:***

**Name of driver** \_\_\_\_\_

**Signed** \_\_\_\_\_

# Concerns and Complaints Process

Most concerns can be resolved informally by discussions with the people concerned.



This flowchart aligns with the school's Concerns and Complaints policy and procedures.





**KIDS CRITTER HUNTING COMPETITION**

Retaruke Catchment Group Invites You To

## Sam the Trap Man

6th August 2023 2pm @ Kaitieke Hall

Sam the Trap Man AKA Hamiora Gibson is heading to the Retaruke Catchment to share his extensive knowledge and expertise in pest control.

Hamiora is an ecologist with Landcare Trust with over 20 years' experience, specialising in predator control and wildlife monitoring.

There will also be a wild critter hunting competition for the kids to enter. Entry will be open to kids up to 15yrs of age, with sections for wild cats, stoats, possums and rats. Email for more info. A social BBQ will be held afterwards.

To Register or enter the kids hunting competition please Contact Natasha Cave WRCC Coordinator - 0272787509 [ncavewrcc@gmail.com](mailto:ncavewrcc@gmail.com)

Whanganui Region Catchment Collective Event

# OWHANGO ALIVE QUIZ NIGHT

Thursday, 24th August



Where: Owhango Pub, SH4 Owhango 3990

When: 7pm Thursday, 24th August for 7.30pm start

How much: \$40per team of 4

Contact: Quiz Master Mark Fredericks on 027 573 4359 to register your team before the night.

Bar meals will be available at Owhango Pub

OWHANGO RESIDENTS & RATE PAYERS INCORPORATED SOCIETY (ORRIS)

# AGM

ANNUAL GENERAL MEETING

**WHEN : THURSDAY  
17TH AUGUST 2023  
TIME : 7PM**

**WHERE : ŌWHANGO  
COMMUNITY HALL**

**AGENDA**

- Reports
- Annual accounts
- Election of officers
- General Business

Note 1: Become a member of ORRIS. The annual membership fee of \$2.00 is due now. Encourage to pay online before AGM Kiwibank account 38 9019 05711111 00 (put your name as reference). Alternatively, you could bring your \$2.00 along to the meeting. We would greatly appreciate your support.

Note 2: Please join us at the conclusion of the AGM for discussing our Owhango Community Plan. We want your ideas to refresh our plan for the next 10+ years. We are looking to refresh our vision for Owhango and build priorities for the community

**WE WELCOME NEW MEMBERS**