



# ŌWHANGO SCHOOL PĀNUI

The children at Ōwhango School are engaged in our unique, rural environment, are individual in their learning, and strong in experience and success.

Phone 07 895 4823

Cell 027 895 4823

[www.owhangoschool.co.nz](http://www.owhangoschool.co.nz)

Email: [office@owhango.school.nz](mailto:office@owhango.school.nz)

[principal@owhango.school.nz](mailto:principal@owhango.school.nz)

7/ 2023

15<sup>th</sup> March 2023

The following was emailed to all parents and caregivers on Saturday at 11:10am:

## **INDUSTRIAL ACTION – NZEI STRIKE 16<sup>th</sup> MARCH**

*The NZEI has recently advised the Ōwhango School Board that its member teachers at our school will be taking strike action on Thursday 16<sup>th</sup> March 2023. The Board has carefully considered the situation and unfortunately decided that we can't provide normal instruction during the strike so the school will officially be **closed for instruction** on the day of the strike.*

*If making alternative arrangements for care is difficult, we can still **supervise** a small number of students if required. Please reply to this email to indicate if your child/children will need this.*

*We know that this is inconvenient for parents and students alike. Please be assured that student safety is our main concern. Thank you for your understanding.*

*Please contact Ewan Starkey via this email address or call him during school hours on 07 895 4823 if you have any queries relating to this decision.*

*Yours sincerely,*

*Nicole Hosking, School Board Presiding Member, on behalf of the Ōwhango School Board*

## **THOUGHT OF THE WEEK / WHAKATAUĀKĪ**

*"I've learnt that we grow only when we push ourselves beyond what we already know."*

*Anonymous, age 53*

## **DATES TO NOTE**

17 March	Interschool Swimming Competition
20-24 Mar	Senior Camp
30 March	Old Coach Road Bike Trip
31 March	Last Day of Golf
4 April	Assembly
5 April	Mobile Library Visit
6 April	Y 7 & 8 Tech
	Last day of school
7 April	Easter Friday
24 April	Teacher Only Day
25 April	Anzac Day
26 April	First Day of Term Two

## **PRINCIPAL'S MESSAGE**

One of the four goals in our school's Strategic Plan is "As a community hub we encourage community involvement." This is increasingly important in a society where it has become common for people to not know their neighbours, or to be disconnected from society as we become more distracted with the internet of things; looking at our phones rather than talking with the people next to us.

We try to achieve this goal in several ways, such as opening the pool over summer to the public, allowing people to use our grounds when the school is not in session, and by putting on school events where the community can come along and see the kids participate and to meet each other.

A great example of this was the progressive dinner put on by the PTA on Saturday. It was a pleasure to mix and mingle, to have fun with over forty people throughout the night. To get to know some new people and to reconnect with people I have met in the past; building a sense of community.

## **CLASSROOM KORERO Senior Room**

There is huge excitement building in class around camp preparations!

In maths this term, our senior students have been working on place value (with Whaea Jessie) and measurement (with Whaea Siobhan). For the past week, they have transferred these skills to a real-world context by planning their camp menus, working out measurements of ingredients needed, and researching food prices to ensure they are sharing costs evenly. It has been an insightful exercise for students, who now appreciate how much time, planning, effort and money goes into their own household shopping and meal preparations.

Last week, at the Mountain Schools Swim Sports, we were really proud of our students for participating

in their events and for supporting their classmates too. We were well prepared for the challenges of the day, thanks to Whaea Jessie for the extra support at the high school pool in advance, and to Tina Freeman for her small group lessons. For many, they had to push themselves out of their comfort zones but they rose to the occasion and made us all proud!

This Friday 17th is St. Patrick's Day. We have a large number of students, and Whaea Siobhan, who share Irish heritage and as a result, we will be having a celebration of Irishness in class. We will learn about Irish music, language, food, traditions, art, symbols, myths and legends. Some whanau have asked if their children can bring food along, they are welcome to but this is not expected. La fheile Phadraig shona dhaoibh (Happy St. Patrick's Day to you all).

### INTERSCHOOL SWIMMING TEAM

Congratulations to these Ōwhango students who met the qualifying times to enter the Taumarunui Interschool Swimming Competition (with the number of events they qualified for in brackets):

Aiden (1), Tilia (4), Taylor (4), Darcy (1), Freida (3), Soren (1), Zurich (2), Hazel (4), Cailin (2), Jamie (1), Piata (3), Delaize (1) and Oliver (3).

The Taumarunui Interschool Swimming Competition is this Friday 17<sup>th</sup> at the Westpac Trust Indoor Swimming Pool in Taumarunui. Races start at 9.30am. We will be leaving school at 8.45am. Thank you to Trudie and Cara who have offered to help on the day and oversee our students.

### Interschools Swimming Transport List

Driver	Can Take	Students
Cara	7	Hazel Piata Cailin Freida
Trudie	4	Oliver Aiden Jamie Darcy
Lakenn	1	Delaize
Theresa	1	Tilia
Robyn	1	Taylor

### MOUNTAIN SCHOOL'S SWIMMING

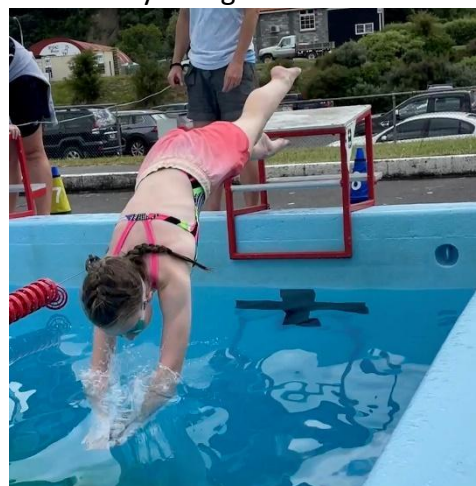
As promised in last week's Pānui, here are some photos of the event:



Billie and Tyler get ready for the flutter board race



Evie and Monty doing the width breaststroke



Hazel starts her race from the blocks



Zurich and Soren prepare



Taylor on the high diving board during free time

## OLD COACH ROAD BIKE TRIP

We have organised for a second attempt with this bike trip on Thursday 30th March. We have rolled our planning over for this, but **please contact the school if you are no longer able help**, or if there are any other changes. Let's hope the weather is favourable this time!

## SENIOR CAMP

On Friday I travelled to Rotorua to check out the Tui Ridge Park Camp site and facilities. It is set on park like grounds with all the cabins, activities and facilities onsite. It is an absolutely beautiful setting and the tamariki are going to LOVE this camp!

Thank you to those parents that were able to make our camp hui on Monday after school. For those that were unable to attend please ask your child for the latest paperwork, which was sent home yesterday. This is very important paperwork including the ingredients for the children's menus, the gear list and transport arrangements. Please let me know a.s.a.p. if you have any questions.

Next Monday the 20<sup>th</sup> of March we will be leaving Ōwhango School for Tui Ridge Park, Rotorua at 9:00am sharp. Please have your child arrive at 8:40am to give us time to organise the packing of the vehicles.

We are expected to return between 3 – 4pm on Friday 24th March. Ewan will send out an email to all senior class parents with a more accurate time at lunchtime on Friday.

We have been doing a great deal of classwork around the Tui Ridge camp, and the tamariki are absolutely fizzing with excitement. Thank you again to our generous PTA for funding this trip and all the parents for providing the food and those that are providing transport and their time to make this camp a success.

Ngā mihi, Jessie Smith

## PTA MYSTERY DINNER

Thanks to the organisers of this successful event- Cara, Maree and Regan. Also, to the people who put on each course- Tania and Mark for the entrée, Trudie and Stephen for the main, Libby and Ryan for the desert, and Ewan and Tim for the supper.

The \$2,250 raised from ticket sales is going to the PTA to support school activities. The \$1,580 made from the 3 raffles and the two auctions is being donated to a Cyclone Gabrielle relief fund.

Many thanks to these sponsors:

Thai Restaurant Taumarunui

Blue Hill Cafe

Ringa Kaha Cabin

The Grounded Artisan

The Park Travellers Lodge

Kainui

Pepper & Me Pack - Deb's Stewart

Puritia Te Manawa

Vertigo Rock Climbing Ohakune

Liquorland Taumarunui for spot prizes

See some photos from the night below.



The delicious course in the Wheeler's woolshed followed with an auction and raffle draw



The huge, glowing brazier at the Ogle's house was popular for eating dessert around



We were lucky to have a calm, warm night, with mārama in her full glory

## TIDY UP

Thanks to Hamish for having a big tidy up of our grounds, including cutting back the plants from our mosaic mural.



## GOLF LESSONS

We have had very impressive feedback from Roy Frampton about Ōwhango students and how they conduct themselves on the golf course each week. Ka rawe tamariki mā and keep it up!

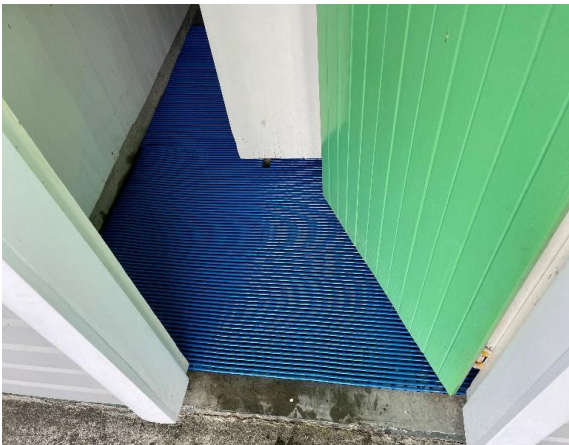
This week, we have a much smaller crew attending golf and they will be transported by Michelle Gavegan at 8am. If your child is both a golfer and has qualified for interschool swimming, we expect they will be representing the school at swimming therefore we have not arranged any golf transport for them. It is not possible to do golf and interschool swimming sports.

## POOL CLOSURE- a reminder

The last day to swim in the pool will be this Friday 17<sup>th</sup> March. It will close at 3pm. Keys can then be returned to the office for a refund. Thanks to everyone who has supported our pool this season.

## OUR NEW CHANGING ROOM MATS

We have just bought some blue mats for the floor of the swimming pool changing shed, so that we don't have to stand in puddles as we get changed. Better late than never, ready for next season! See the photo below.



## Community Notices

### PRIMARY NETBALL

If your child would like to play netball this year, please return your permission slip by **this Friday 17<sup>th</sup>**, so we can begin organising teams and trainings. Thank you to Lakenn and Stacey who have offered to coach! We need a couple more younger players so please get your permission slips to the office A.S.A.P.! We have included the permission slip again, at the bottom of this Pānui.

### TAUMARUNUI JUNIOR HOCKEY

Due to a double booking of the High School courts, hockey will not be played on Wednesday afternoon. The day will hopefully be moved to this Friday, we will let you know as soon as this is confirmed.

### TAUMARUNUI JUNIOR SOCCER

Last call for permission slips! If your child would like to play soccer next term please return your permission slip to the office TOMORROW. We have combined with Kaitieke to make a Year 3,4,5 team and a Year 6,7,8 team. At present we have 7 in the younger team and 6 in the older team (1 player short). Please note, due to low team numbers, it is vital you commit to turning up to all of your games.

## OBSTACLE CHALLENGE EVENT

**TAUMARUNUI POOLS** Events by CLM  PLACED BY  ADMINISTERED BY 

**SUNDAY 19TH OF MARCH 2023**

**TAUMARUNUI DOMAIN, TAUMARUNUI**

**FREE**

★ **13 fun and challenging obstacles**

★ **Children aged 3-13** Parents and guardians can also join the fun!

★ **12:00PM - 3:00PM** 30-minute sessions to do the course as many times as you like

 For more info and to book your **FREE** entry visit [www.climz.co.nz/ruapehu-swimming-pools/taumarunui-pools](http://www.climz.co.nz/ruapehu-swimming-pools/taumarunui-pools)

**ROLLER DISCO AT NATIONAL PARK SCHOOL HALL**



**SCHOLASTIC ISSUE 2**

Please have your orders returned by 29 March to the office or [bookclub.scholastic.co.nz](http://bookclub.scholastic.co.nz)

**FRESH FLOWERS FUNDRAISER- a reminder**

20% from every bunch sold will be donated to the school PTA.

\$15 / small mixed bunch

\$30 / large mixed bunch

Dahlias \$10 / 5 stems

Sunflowers \$10 / 5 stems

Contact Regan on 027 331 9377

**PAYING BY INTERNET BANKING DETAILS:**

**Ōwhango School BoT:** Stationery / sports & uniform purchases: **03 0426 0141783 00**

**PTA:** Fundraisers 030 426 0156205 00

**2023 TERM DATES**

**Term 1-** 1<sup>st</sup> February to 6<sup>th</sup> April

**Term 2-** 24 April to 30<sup>th</sup> June

**Term 3-** 17<sup>th</sup> July to 22<sup>nd</sup> September

**Term 4-** 9<sup>th</sup> October to 19<sup>th</sup> December

**Teacher Only Days-** 24<sup>th</sup> April, 6<sup>th</sup> June, and 20<sup>th</sup> November

**THANKS TO OUR SPONSORS FOR THE PAST TWELVE MONTHS**

- W & C O'Donnell:** Duffy Books in Schools
- DG Brown Contracting:** Duffy Books in Schools
- Doyle Valuations:** Duffy Books in Schools
- Ōwhango Motors:** Duffy Books in Schools
- Ōwhango Adventures:** Free bus use for trips
- CamoKai Takeaways National Park:** Support at our T42 Fundraiser
- Aaron Owen Bayleys Ruapehu:** Three new class trophies
- Vet Ent:** A Line Trimmer prize for a raffle
- North Fuels for Schools Scheme:** RC & JF Walker, MJ & TM Lord, KF & VI Kimberley, JB & KA Lord, WM & CE O'Donnell, Tina Freeman, Willy & Cara O'Donnell, Willy Bryan Earthworks, DR & LA Marshall.
- PC Solutions-**Free light hireage for our disco and repair of our sound system
- Foxglove Frames** – Toni Grass for free repairs to blinds and support on our Ski Camp
- Veolia-** use of their truck for the Christmas Parade
- Ruapehu Flooring-** free installation of our carpet in the office

✂-----

**Taumarunui Primary Netball Competition**

(This is an extra-curricular activity- outside of school hours and requires parent help with coaching and managing teams)

Child/ren's Name/s.....

School Year/s.....

Parent: **Yes / No** I can coach a team. (Please circle your answer)

Parent: **Yes / No** I can manage a team. (Please circle your answer)

If you have your umpires' ticket and are able to umpire this season **Yes / No** (Please circle your answer)

Adult's Name.....